

# NOMAD S Band 19 dBi NE7647-B



This station is designed for signals Receive in S frequency band.

A friendly Man Machine Interface installed on a PC allows its remote monitoring & control via Ethernet link.

### Specifications

RF Specifications	
Source	Single channel monopulse
Frequency	2200-2400 MHz
Gain	19 dBi typ. @ 2300 MHz
Polarization	RHCP and LHCP
3 dB Beamwidth	~12° Elevation @ 2300 MHz ~19° Azimuth @ 2300 MHz
Axial ratio	< 2 dB
Side lobes	< 11 dB
Mechanical specifications	
Elevation range	-5° to +90°
Azimuth range	Unlimited (Continuous rotary joint)
Rotation speed max	≥ 20°/s
Pointing accuracy	± 0.08° (in manual mode)
Total weight	~47 kg
Color	White RAL9003

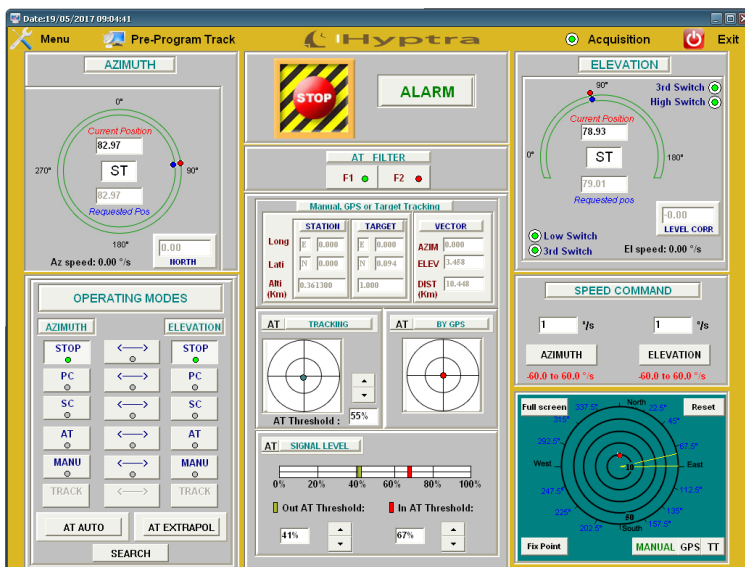
Environnemental specifications	
Storage temperature	-30°C to +70°C
Operating temperature	-10°C to +55°C
Rain	Up to 50 mm/hour
Relative humidity	0 to 100% (outdoor)
Wind resistance	80 km/h (ground fixed) 50 km/h (on tripod)
Electrical specifications	
Pedestal peak consumption	0.3 kVA, 210-240 VAC, 50Hz

## Options

Other frequency bands on demand  
 Up to 16 bits digital encoder (0.005° pointing accuracy)  
 Rotation speed on demand  
 Inertial measurement unit (North and level)  
 Tracking receiver  
 Embedded GPS

## Antenna control unit (ACU)

The dedicated software, through the color display, provides a user friendly interface (see below non contractual example of ACU screen)  
 The software can easily be customized for user's needs.



## Operating modes

STOP, PC, SC, Manual, GPS, AT, fixed points, Survival, GPS assisted AT

[Link to website](#)

**HYPTRA**

7 Rue de Basly  
 14400 Tailleville

Téléphone : 02 50 30 80 14  
 Email: Hyptra@hyptra.com