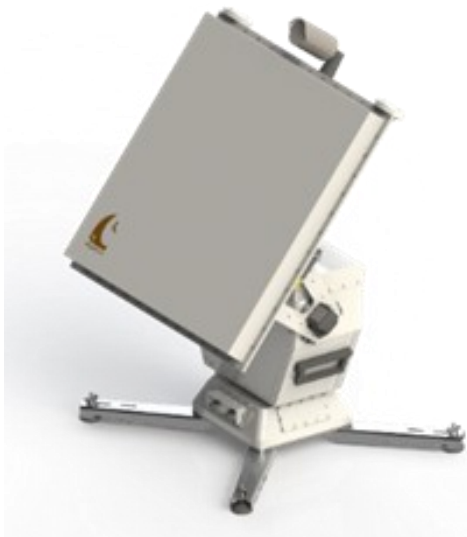


NOMAD S Band 23 dBi NE7647-C



This station is designed for signals Receive in S frequency band.

A friendly Man Machine Interface installed on a PC allows its remote monitoring & control via Ethernet link.

Specifications

TM Antenna	
Source	Single channel monopulse
Frequency	2200-2400 MHz
Gain	23 dBi typ. @ 2300 MHz
Polarization	RHCP and LHCP
3 dB Beamwidth	~10° @ 2300 MHz
Axial ratio	< 2 dB
Side lobes	< 11 dB
Mechanical specifications	
Elevation range	-5° to +90°
Azimuth range	Unlimited (Continuous rotary joint)
Rotation speed max	≥ 20°/s
Pointing accuracy	± 0.08° (in manual mode)
Total weight	~53 kg
Color	White RAL9003

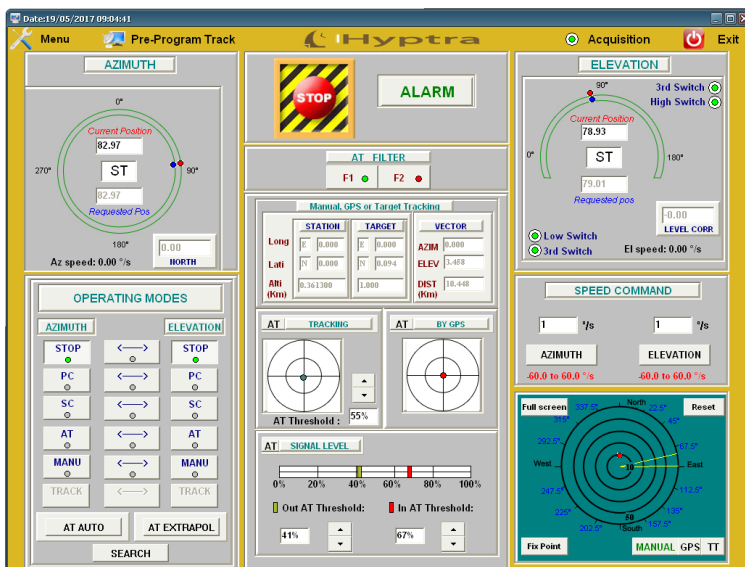
Environnemental specification	
Storage temperature	-30°C to +70°C
Operating temperature	-10°C to +55°C
Rain	Up to 50 mm/hour
Relative humidity	0 to 100% (outdoor)
Wind resistance	80 km/h (ground fixed) 50 km/h (on tripod)
Electrical specification	
Pedestal peak consumption	0.3 kVA, 210-240 VAC, 50Hz

Options

Other frequency bands on demand
 Up to 16 bits digital encoder (0.005° pointing accuracy)
 Rotation speed on demand
 Inertial measurement unit (North and level)
 Tracking receiver
 Embedded GPS

Antenna control unit (ACU)

The dedicated software, through the color display, provides a user friendly interface (see below non contractual example of ACU screen)
 The software can easily be customized for user's needs.



Operating modes

STOP, PC, SC, Manual, GPS, AT, fixed points, Survival, GPS assisted AT

[Link to website](#)

HYPTRA

7 Rue de Basly
 14400 Tailleville

Téléphone : 02 50 30 80 14
 Email: Hyptra@hyptra.com