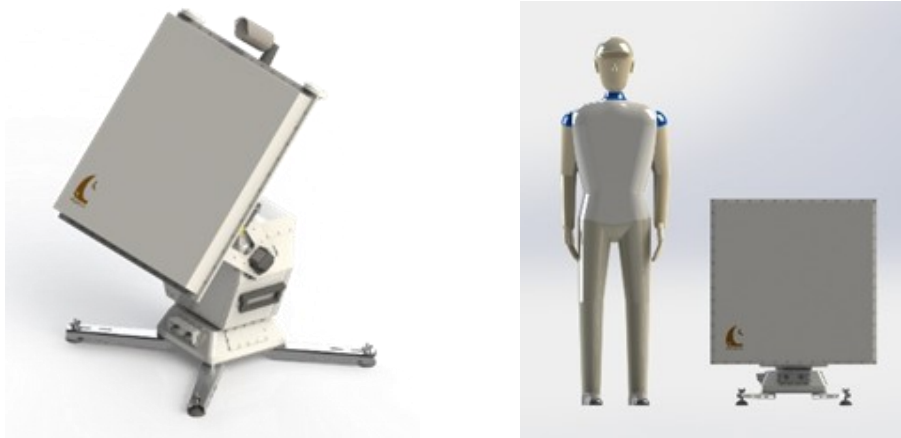


NOMAD

S Band 21 dBi

NE7647-D



This station is designed for signals Receive in S frequency band.

A friendly Man Machine Interface installed on a PC allows its remote monitoring & control via Ethernet link.

Specifications

RF Specifications	
Antenna Type	Array antenna Option: Short range antenna (electronic switching)
Frequency	2200-2400 MHz
Gains	21 dBi typ. @ 2300 MHz (Directionnal antenna) Option: 16 dBi typ. @ 2300 MHz (Short range antenna)
LNA	+50 dB, NF <0.5dB
Polarization	RHCP & LHCP
3 dB Beamwidth	+/- 6.5° Az/EI @ 2300 MHz (Directionnal antenna) Option: +/- 10° Az/EI @ 2300 MHz (Short range antenna)
Acquisition angle	+/- 13° Az/EI @ 2300 MHz (Directionnal antenna) Option: +/- 20° Az/EI @ 2300 MHz (Short range antenna)
Side lobes	> -15 dB
Mechanical specifications	
Elevation range	-10° to +90°
Azimuth range	Unlimited
max. rotation speed max. acceleration	≥ 30°/s ≥ 60°/s ²
Pointing accuracy	± 0.08°
Weight	~45kg
Dimensions	1.1m x 0.8m x 0.7m at 0° Elevation
Fixation	4 screws

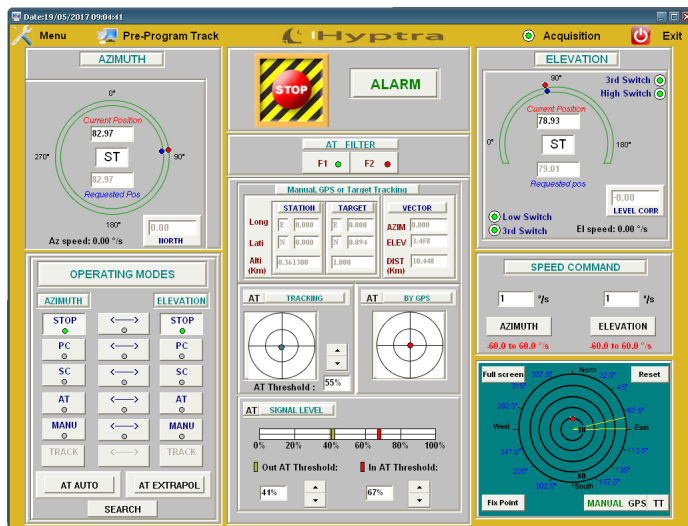
Environnemental specifications	
Storage temperature	-35°C to +70°C
Operating temperature	-10°C to +55°C (outdoor)
Rain	Up to 150 mm/h
Relative humidity	0 to 100% (outdoor)
Wind resistance	100 km/h
Protection	IP63
Electrical specifications	
Pedestal peak consumption	0.6 kVA, 210-240 VAC, 50Hz

Options

- Other frequency bands on demand
- Rotation speed on demand
- Inertial measurement unit (North and level)
- Tracking receiver
- Embedded GPS
- Short range antenna (electronic switching)

Antenna control unit (ACU)

The dedicated software, through the color display, provides a user friendly interface (see below non contractual example of ACU screen)
 The software can easily be customized for user's needs.



Operating modes

STOP, PC, SC, Manual, GPS, AT, fixed points, Survival, GPS assisted AT

[Link to website](#)

HYPTRA

7 Rue de Basly
 14400 Tailleville

Téléphone : 02 50 30 80 14
 Email: Hyptra@hyptra.com