

# PROTECTIIS 4.20m S Band NE7660-0



This station is designed for signals Receive in S frequency band.

A friendly Man Machine Interface installed on a PC allows its remote monitoring & control via Ethernet link.

## Specifications

TM Antenna	
Source	Single channel monopulse
Frequency	2200-2400 MHz
Gain	37 dBi typ. @ 2300 MHz
Polarization	RHCP and LHCP
3 dB Beamwidth	~2.2° @ 2300 MHz
Axial ratio	< 2 dB
Side lobes	< 15 dB
Mechanical specifications	
Elevation range	-5° to +90°
Azimuth range	Unlimited (Continuous rotary joint)
Rotation speed max	≥ 20°/s
Pointing accuracy	± 0.08° (in manual mode)
Total weight	~1600 kg (with radome)
Color	White RAL9003

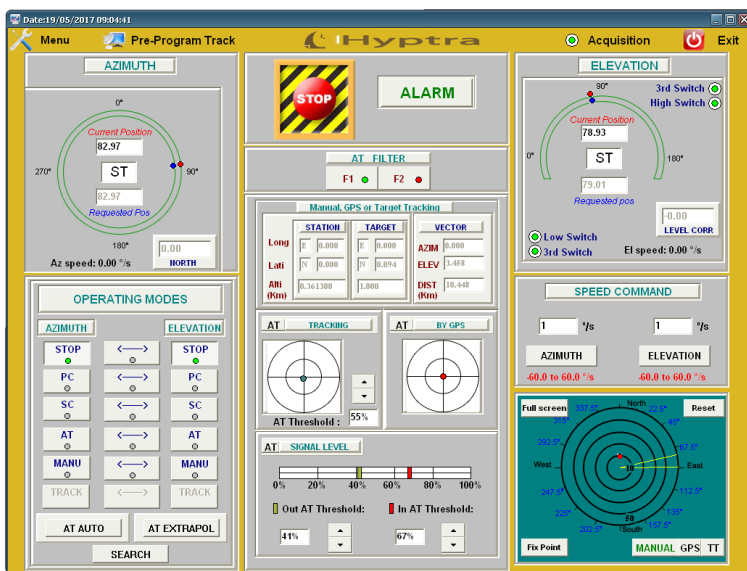
Environnemental specification	
Storage temperature	-30°C to +70°C
Operating temperature	-10°C to +55°C (outdoor)
Relative humidity	0 to 100% (outdoor)
Electrical specification	
Pedestal peak consumption	0.3 kVA, 210-240 VAC, 50Hz
Air conditioner peak consumption	0.8 kVA, 210-240 VAC, 50Hz
Radome	
Dimensions	Ø5,50m x 5,75m
Composition	Polyester resin/glass fiber
Protection	Anti UV Gelcoat (white RAL9016)
Wind resistance	200 km/h
S band attenuation	0.45 dB

### Options

- Other frequency bands on demand
- Up to 16 bits digital encoder (0.005° pointing accuracy)
- Rotation speed on demand
- Inertial measurement unit (North and level)
- Tracking receiver
- Embedded GPS

### Antenna control unit (ACU)

The dedicated software, through the color display, provides a user friendly interface (see below non contractual example of ACU screen)  
 The software can easily be customized for user's needs.



### Operating modes

STOP, PC, SC, Manual, GPS, AT, fixed points, Survival, GPS assisted AT

[Link to website](#)

**HYPTRA**

7 Rue de Basly  
 14400 Tailleville

Téléphone : 02 50 30 80 14  
 Email: Hyptra@hyptra.com