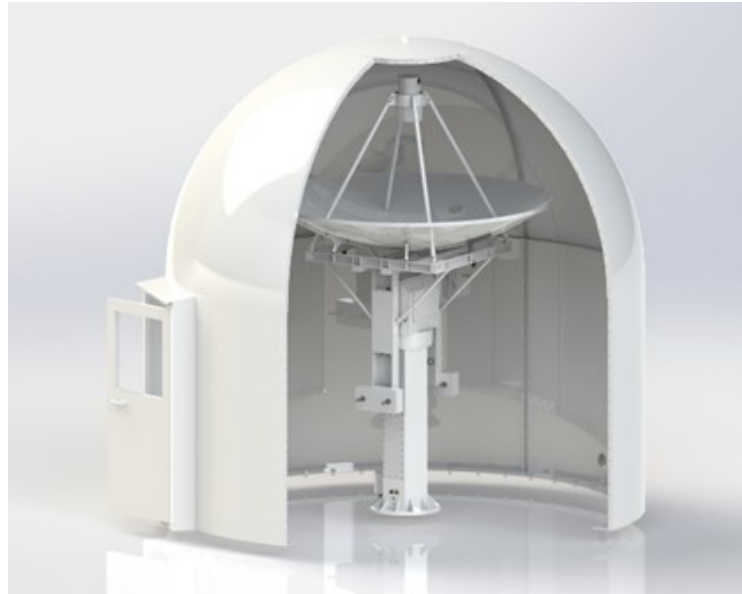


PROTECTIIS 2.40m S Band NE7690-0



This station is designed for signals Receive in S frequency band. A friendly Man Machine Interface installed on a PC allows its remote monitoring & control via Ethernet link.

Specifications

TM Antenna	
Source	Single channel monopulse
Frequency	2200-2400 MHz
Gain	32 dBi typ. @ 2300 MHz
Polarization	RHCP & LHCP
3 dB Beamwidth	~3.8° @ 2300 MHz
Axial ratio	< 2 dB
Side lobes	< 15 dB
Mechanical specifications	
Elevation range	-10° to +90°
Azimuth range	Unlimited (Continuous rotary joint)
Rotation speed max	≥ 20°/s
Pointing accuracy	± 0.08° (in manual mode)
Total weight	~600 kg (with radome)
Color	White RAL9003

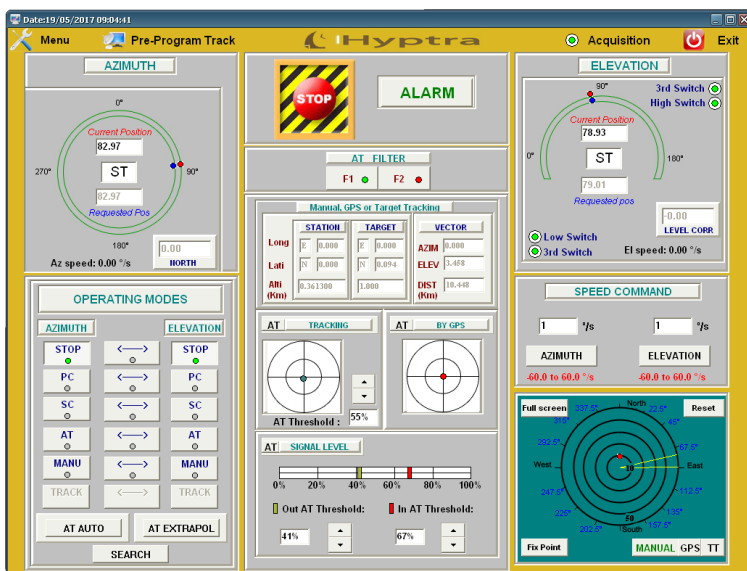
Environnemental specification	
Storage temperature	-30°C to +70°C
Operating temperature	-10°C to +55°C
Relative humidity	0 à 100% (outdoor)
Electrical specification	
Pedestal peak consumption	0.3 kVA, 210-240 VAC, 50Hz
Air conditioner peak consumption	0.8 kVA, 210-240 VAC, 50Hz
Radome	
Dimensions	Ø4,10m x 4,04m
Composition	Polyester resin/glass fiber
Protection	Anti UV Gelcoat (White RAL9016)
Wind resistance	200 km/h
S band attenuation	0.45 dB

Options

- Other frequency bands on demand
- Up to 16 bits digital encoder (0.005° pointing accuracy)
- Rotation speed on demand
- Inertial measurement unit (North and level)
- Tracking receiver
- Embedded GPS

Antenna control unit (ACU)

The dedicated software, through the color display, provides a user friendly interface (see below non contractual example of ACU screen)
 The software can easily be customized for user's needs.



Operating modes

STOP, PC, SC, Manual, GPS, AT, fixed points, Survival, GPS assisted AT

[Link to website](#)

HYPTRA

7 Rue de Basly
 14400 Tailleville

Téléphone : 02 50 30 80 14
 Email: Hyptra@hyptra.com