

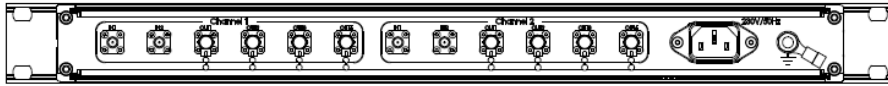
Power divider rack NE9152-0 2 channels/2 inputs/4 outputs



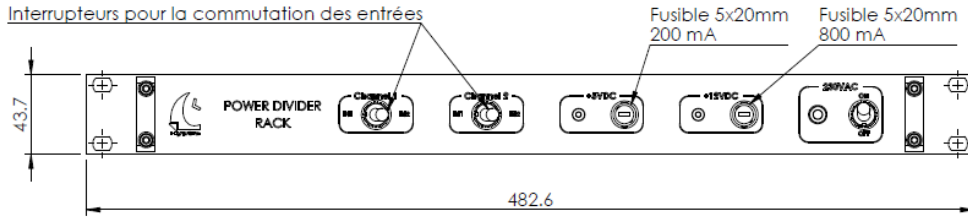
Specifications

RF specifications	
Frequency	2000-2600 MHz
Number of channel	2
Number of input per channel	2 (switchable)
Number of output per channel	4
Output gain	From 0 +/- 1 dB to +19dB +/- 1 dB
Input/output impedances	50 Ohms
VSWR	< 1.5:1
Max input power level	+10 dBm
Noise figure	3.6 dB typ. @ 25°C
Mechanical & environmental specifications	
Dimensions	Rack 19" / 1U / 280mm
Weight	< 2kg
Connector	SMA female
Temperature	-10°C to +65°C
Consumption	16W max

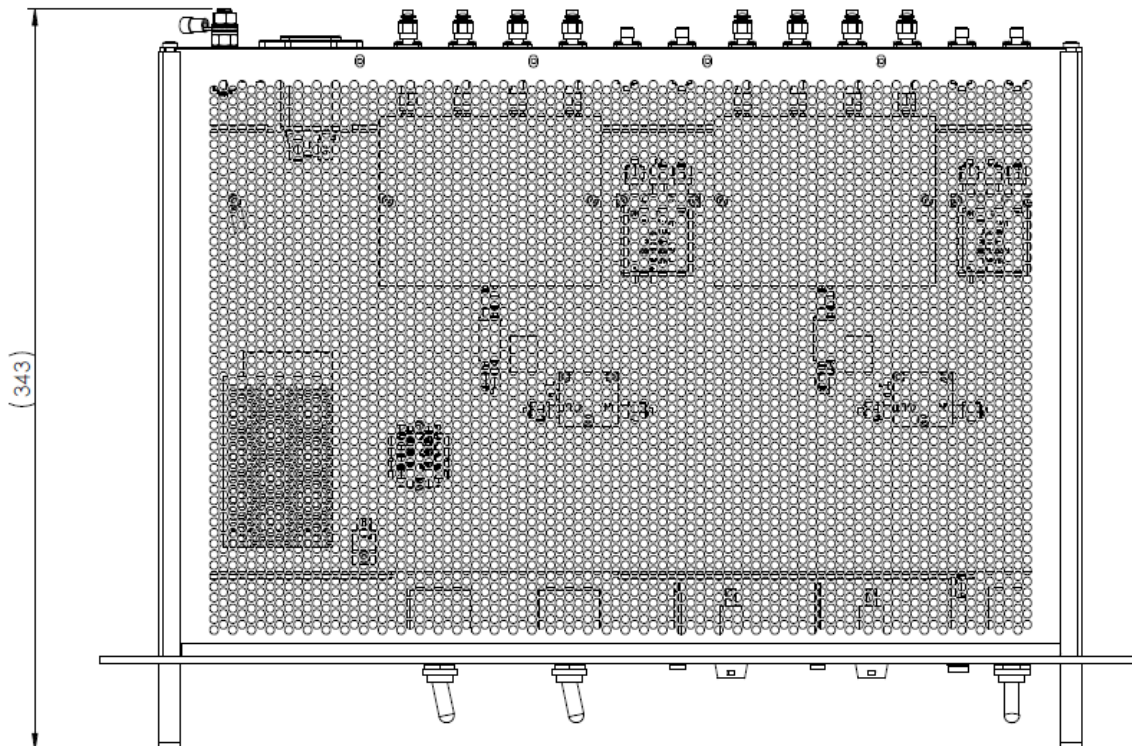
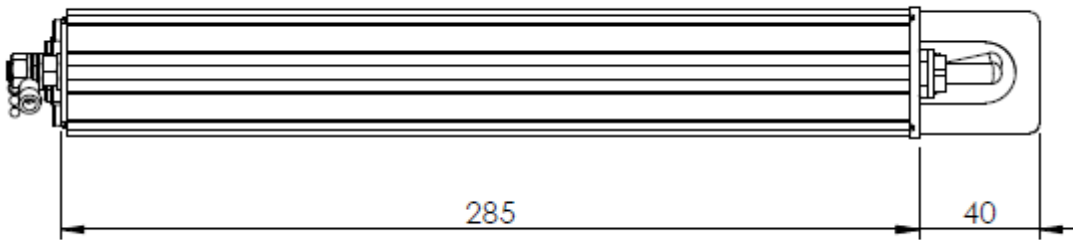
Mechanical drawing



Vue de dos



Vue de face



HYPTRA

7 Route de Basly
14400 Tailleville

Téléphone : 02 50 30 80 14
Email: Hyptra@hyptra.com